

CHOREGRAPHE



- 1- Timeline
- 2- Box library
- 3- Flow diagram
- 4- Customizable 3D view

GET THE MOST OUT OF YOUR NAO

Choregraphe® was developed by Aldebaran Robotics™ to allow rapid development of complex behaviors by novice users while providing the ability to have a fine control of motions for demanding programmers.

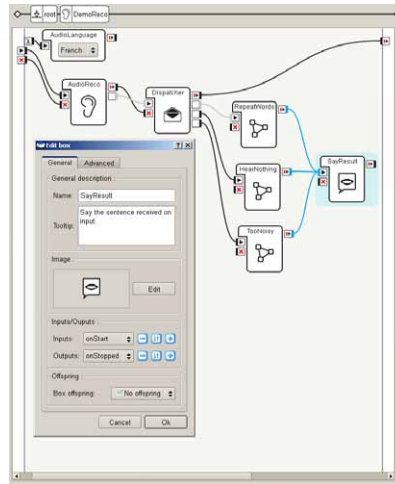
Its intuitive graphical interface makes the difference: it allows you to get started by dragging and dropping pre-defined behavior boxes from the Box library and link them together to compose your own Nao behaviour in the flow diagram.

Once familiar with the software, you can compose your own boxes, play with time scheduled programming and execute your behaviors: on real Nao via Wi-Fi, via Choregraphe's 3D window or by using advanced simulators such as Microsoft Robotics Developers Studio and Cyberbotics Webots.

Fully cross platform with support for Windows, Mac OS and Linux, Choregraphe fits seamlessly into your existing development environment.

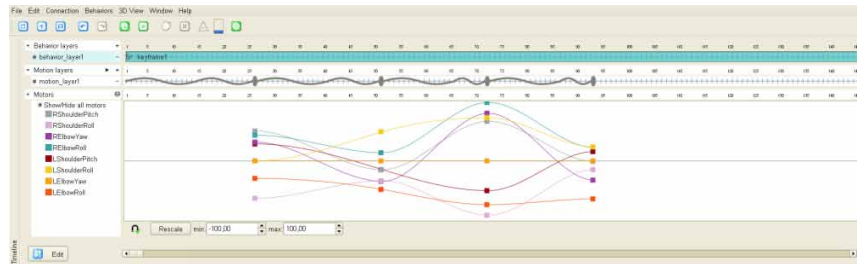
CHOREGRAPHE ELEMENTS

A high performance software



The flow diagram is best suited to create event driven behaviors in an easy-to-use graphical way. Each element visually represented by a box may contain other boxes linked together – creating a deep hierarchy of nested logic.

A set of classical pre-programmed behaviors are proposed: walk, dance, turn, movement, lie down, standup, arm motion, reading sensors, using speech synthesis, speech recognition... By assembling these basic behaviors, it is possible to create an original behavior. Of course, anybody can create its own boxes that can be added to the existing library.



The Timeline. Behavior layers and motion layers contain actions to be executed in parallel. The horizontal position indicates the starting time and duration of each action.

Programming Nao consists in implementing behaviors, themselves made of several behaviors. The flow diagram representation gives you the ability to describe sequential and parallel behavior triggered by events, while the timeline gives access to time scheduled programming. The simultaneous use of these two approaches opens huge possibilities to play with a humanoid robot without compiling a single line of C++.

Thanks to the Wi-Fi connection, as soon as a behavior has been developed in Choregraphe, a simple click on the Play button gives the opportunity to watch Nao executing the behavior.

ABOUT THE NAO ACADEMICS EDITION

After 3 years of research, Aldebaran Robotics has developed NAO a 58-cm biped robot. It is a unique combination of hardware and software in a great design.

Nao stands tall in all points amongst its robotic brethren. Platform agnostic, it can be programmed and controlled using Linux, Windows or Mac OS. The hardware has been built from the ground up with the latest technologies providing great fluidity in its movements and offering a wide range of sensors.



www.aldebaran-robotics.com
 academics@aldebaran-robotics.com
 Tel: +33 1 77 371 752
 Fax: +33 1 77 352 268



Aldebaran Robotics, the Aldebaran Robotics logo, and Nao are trademarks of Aldebaran Robotics company. Other trademarks and trade names used in this document refer either to the entities claiming the marks and names, or to their products. Aldebaran Robotics disclaims proprietary interest in the marks and names of others. Chorégraphe® & Nao® are registered trademarks of Aldebaran Robotics. The design of Nao® is the property of Aldebaran Robotics. All the photos featured in this document are non contractual and are the property of Aldebaran Robotics.